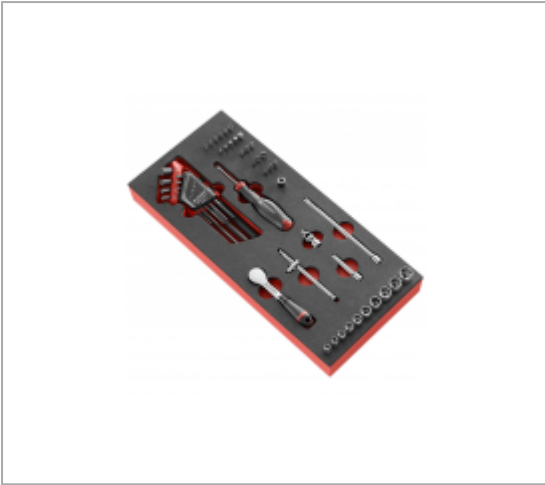


46-PIECE 1/4" METRIC 6-POINT SOCKET FOAM MODULE - R.181



Description :

Suited to CHRONO XL, CHRONO+, JET XL, JET+ roller cabinets and MBOX.L box. Contains:

1 x high performance 1/4" ratchet R.181

10 x 1/4" metric 6-point sockets R. 5,5 6 7 8 9 10 11 12 13 14 mm.

2 x 1/4" extensions: L 55 mm (R.209) L 150 mm (R.215).

1 x 1/4" universal joint: R.240A.

1 x 1/4" sliding handle: R.120A.

1 x 1/4" screwdriver handle: R.236A.

1 x 1/4" socket bit holder with retaining pin standard for 1/4" bits: R.235.

20 x bits 1/4" drive bit 6.35 mm L 25 mm:

EP.1T for Philips® : PH1 PH2 PH3.

ED.1T for Pozidriv®: PZ1 PZ2 PZ3.


ES.1T for slotted head : 4.5 6.5 8.0 mm.

EH.1 for metric 6-point socket head screws: 3 4 5 6 7 mm.

EXR.1 for vis Resistorx® screws: TT15 TT20 TT25 TT27 TT30 TT40.

8 x metric spherical head key set (83SH.JP9A): 83SH. 1.5 2 2.5 3 4 5 6 8 10 mm.

References :

	H [MM]	L [MM]	[G]
MODM.R181-36	45	418	1025