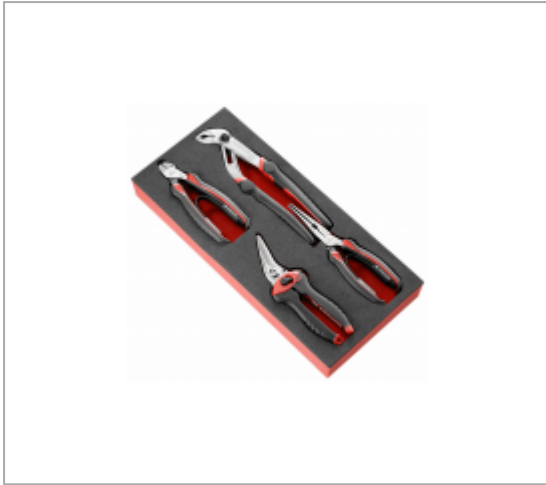


FOAM MODULE OF 4 PLIERS & SHEARS



Description :

- Including: - Diagonal cutters 192A.16CPE. - Half-round nose pliers 185A.20CPE. - Locking twin slip-joint multigrip pliers 181A.25CPE. - Multi-purpose shears 980C.



References :

	H [MM]	L [MM]	P [MM]	CONTAINER	CONTENT SET	TRAY	[KG]
MODM.CPEA2	45	188	418	PM.MODM.CPEA2	192A.16CPE - 185A.20CPE - 181A.25CPE - 980C	PM.MODM.CPEA2	0.974