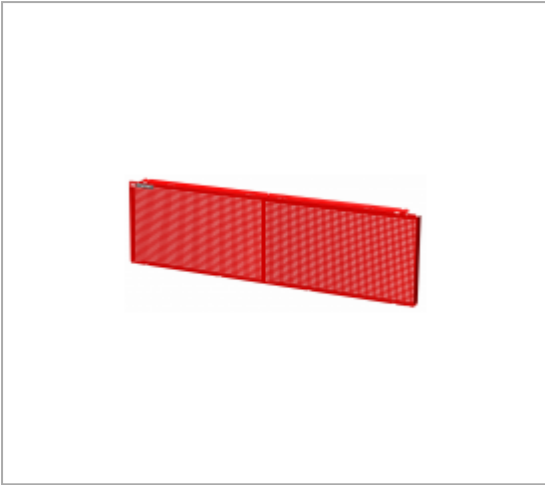


JETLINE+ HALF PANELS (400 MM) - L.1452 MM




Description :

- Perforated panel: 6 x 6 mm in steps of 12 mm.
- Fixing of tools using the CKS range of hooks.
- Stacking of 2 half-panels possible.
- Made of Epoxy painted sheet steel (thickness 12/10ths).
- Colour red 3020.



References :

|  | H [MM] | L [MM] | P [MM] | COLOR | [KG] |
|---|--------|--------|--------|----------|-------|
| JLS2-PPAV2 | 403 | 1452 | 45 | Red 3020 | 6.200 |