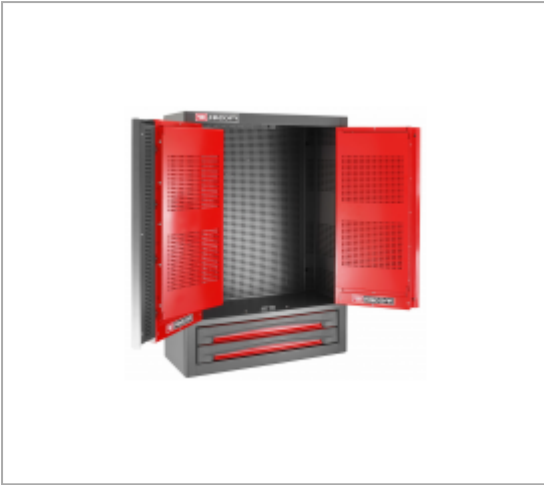


WALL UNIT WITH 2 DRAWERS AND SHUTTERS - 1000 MM WALL




Description :

- Vertical fastening part:
- Storage surface area: 1.8 m².
- The base and sides of the cabinet, door liners, as well as the 2 additional panels, are perforated for hanging tools using the CKS system.
- Opening at 180° of the 2 swinging doors for maximum visibility and accessibility.
- Drawer section: - 2 drawers with heavy-duty ball-bearing slides, 100% opening. - Drawer useful size: L.569 x H.60 x D.210 mm.
- Centralised locking of the doors and drawers by keylock.
- Wall mounted (through holes provided) or on a workbench.
- Dimensions: L.720 x D.280 x H.1.000 mm. Supplied without tools.



References :

	H [MM]	L [MM]	P [MM]	[KG]
2202XL	1000	720	280	42.50